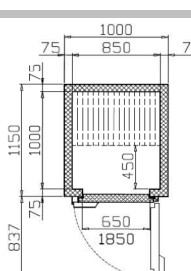
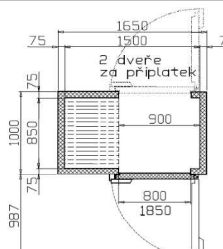
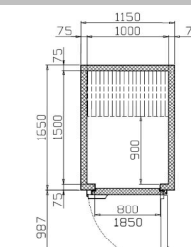
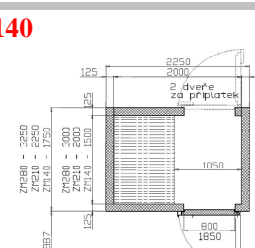
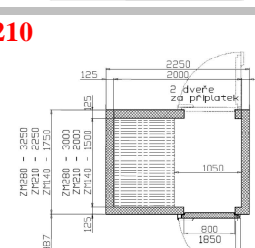
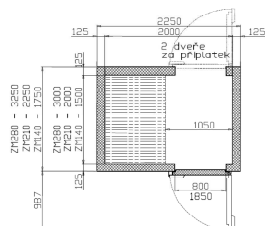


## Price list - ZM BLAST FREEZER

### SCHOCK FREEZING DEVICE - SPLIT CONDENSIGN UNIT MODELS

Model	Capacity **	Output *	Configuration	Price		
					external dimensions	+70°C=>+3°C in 90 min ***
<b>ZM 70A</b> 	<b>20x GC 1/1</b>	or	140 kg	<b>70 kg</b>	WHITE LACQ. / WHITE LACQ.	14 472,04 €
	<b>20x 600x400</b> external w x l x h [mm]: 1000x1150x2100				INOX / WHITE LACQUERED	15 469,82 €
	internal w x l [mm]: 850/450				INOX / INOX	- €
	1pc door 650x1850					
<b>ZM 70</b> 	<b>20x GC 1/1</b>	or	140 kg	<b>70 kg</b>	WHITE LACQ. / WHITE LACQ.	14 726,43 €
	<b>20x 600x400</b> external w x l x h [mm]: 1650x1000x2100				INOX / WHITE LACQUERED	15 871,59 €
	internal effective w x l [mm]: 900/850				INOX / INOX	- €
	1pc door 800x1850					
<b>ZM 140A</b> 	<b>40x GC 1/1</b>	or	280 kg	<b>140 kg</b>	WHITE LACQ. / WHITE LACQ.	19 424,99 €
	<b>40x 600x400</b> external w x l x h [mm]: 1650x1150x2100				INOX / WHITE LACQUERED	20 539,07 €
	internal effective w x l [mm]: 1000/900				INOX / INOX	- €
	1pc door 800x1850					
<b>ZM 140</b> 	<b>40x GC 1/1</b>	or	280 kg	<b>140 kg</b>	WHITE LACQ. / WHITE LACQ.	20 660,61 €
	<b>40x 600x400</b> external w x l x h [mm]: 2250x1750x2200				INOX / WHITE LACQUERED	21 903,49 €
	internal effective w x l [mm]: 1050/1500				INOX / INOX	- €
	1pc door 800x1850					
<b>ZM 210</b> 	<b>60x GC 1/1</b>	or	420 kg	<b>210 kg</b>	WHITE LACQ. / WHITE LACQ.	24 383,20 €
	<b>60x 600x400</b> external w x l x h [mm]: 2250x2250x2200				INOX / WHITE LACQUERED	25 774,28 €
	internal effective w x l [mm]: 1050/2000				INOX / INOX	- €
	1pc door 800x1850					

**ZM 280****80x GN 1/1**

or 560 kg

**280 kg**WHITE LACQ. /  
WHITE LACQ.**80x 600x400**external w x l x h [mm]:  
2250x3250x2200INOX / WHITE  
LACQUEREDinternal effective w x l [mm]:  
1050/3000

INOX / INOX

1pc door 800x1850

individual  
quotation

\* Testing food weight / 1 cycle, stowage on uncovered GC containers, layer up to 35 mm.

\*\* Equipment and usage examples of cabinet - containers, trays and grills are not included in the basic price.

Please compare with the total device output in kg/cycle and the trolley dimensions.

\*\*\* Theoretical capacity for chilling cycle.

**Basic configuration accessories:**

Control panel with the puncture probe (4 programmable cycles: soft, hard chill, freezing, keeping)

Cooling device is without the connecting pipes (pipes price will be calculated upon real consumption).

Insulating cabinet insulation thickness 75mm PUR for ZM 70, 70A, 140A and 125 mm PUR for ZM 140, 210, 280.

1pc door 650x1850 mm for ZM 70A, 1pc door 800x1850 mm for ZM 70, 140A, 140, 210, 280.

Floor configuration: INOX plate over 75 mm PUR for ZM 70, 70A, 140A and 125 mm for ZM 140, 210, 280.

**Accessories and Optional Equipment:**

Entrance ramp - INOX AISI 304, width 800 mm	266,91 €
Trolley for 20 pc GN1/1 - INOX	584,29 €
Trolley for 20 pc GN2/1 - INOX	730,06 €
Container GC 1/1 - 40mm, INOX, without cover	19,79 €
Second door (800x1850) for ZM 70-280 - white finish	1 016,35 €
Second door (800x1850) pro ZM 70-280 - stainless finish	1 239,65 €
Lighting for models 70-140 (incl. door switch)	132,85 €
Cooling air and product core temperature printer	on request
Connecting pipes for cooling device	individual quotation

Prices are in EUR, EXW Lužec nad Vltavou, w/o VAT, transport and assembly.

Prices are valid since 01.01.2018 untill 31.03.2018.